



SCAN QR CODE
TO KNOW MORE

SINTEX-BAPL LIMITED

Toll-Free No.: 1800-121-2764

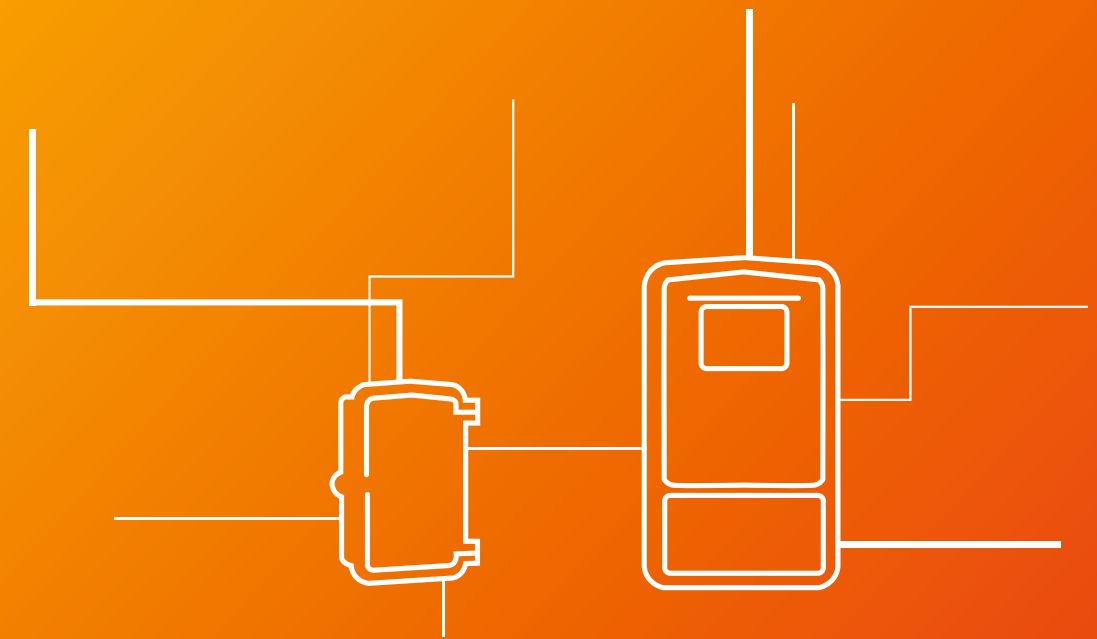
www.sintexonline.com

Email: sintex_support@welspun.com

 [sintex_bapl_limited](#)  [sintexBAPLLimited](#)  [Sintex BAPL Limited](#)

Sintex

Welspun[®]



100% shockproof.



Electrical and SMC Products

SMC Junction Boxes



FRP Battery Stands



Sintex Battery Stands are fabricated using FRP sections and polymeric hardware. Designs are available in both single row and double row, as well as in single tier and double tier. Dimensions and load-bearing members are selected to suit the battery. Sintex FRP Battery Stands are available for all types and all makes of batteries.

Features:

- Excellent dielectric strength, thereby eliminating leakage of current
- Not affected by termite and fungus attack
- Easy to clean and wash
- No warping
- Lightweight and strong
- Maintenance-free
- Resistant to battery acids
- Self-coloured

FRP Cable Trays



Cable Trays are used to support power cables and control cables for indoor and outdoor applications. G.I./M.S. cable trays erode, corrode and spread heat, thus leading to power interruptions. Sintex FRP Cable Trays are safe, durable and cost-effective for routing and supporting cables. Manufactured as per NEMA/BIS consultants' specifications, Sintex FRP Cable Trays are available in the following varieties:

Ladder Type FRP Cable Trays:

Two longitudinal side rails connected by rungs at regular interval.

Trough Type FRP Cable Trays:

Structures with a solid or perforated bottom, with integrated or separate longitudinal side rails.

Channel Type FRP Cable Trays:

Structures with a solid or perforated bottom with integrated side rails.



Features:

- Excellent weather resistance
- UV stabilised
- High load-bearing capacity
- Non-magnetic
- No corrosion and no chemical erosion
- Maintenance-free
- Easy to install
- Lightweight
- Fire retardant

Features:

- Shockproof and rustproof
- Rotproof and termite resistant
- Cable entry from bottom and/or sides
- 100% weatherproof
- Pole mounting arrangement
- Tamper proof
- Pilferage proof
- Restricts unauthorised tapping
- Maintenance-free
- Fire retardant – Class FV-0 as per IS:11731 Part-II or V-0 as per UL-94
- High heat distortion temperature (200°C as per IS:10192)

| RANGE & SPECIFICATIONS | | |
|---|----------------------------------|---|
| Code No. | Inside Dimensions (mm) H x W x D | Applications |
| SIDE HINGED – DOOR FIXED TO BASE WITH HINGES | | |
| GSJB-1414 | 140 x 140 x 95 | Junction box/cut-out box/fuse box for single phase/2 core low wattage FTI/CFL based lighting system for pedestrian/pathway illumination |
| GSJB-2014 | 200 x 140 x 95 | |
| GSJB-2817 | 240 x 130 x 110 | Pole mounted junction box/cut-out box/fuse box for road/street lighting for 3 phase/4 core high wattage HPSV/HPMV/MH based lighting system for industrial applications |
| GSJB-2520 | 250 x 200 x 105 | |
| GSJB-3020[1] (right hinged) | 300 x 200 x 105 | |
| TOP HINGED – DOOR FIXED TO BASE WITH HINGES ON TOP | | |
| GSJB-1616-T | 155 x 155 x 100 | Junction box/cut-out box/fuse box for single phase/2 core low wattage FTI/CFL based lighting system for pedestrian/pathway illumination |
| GSJB-3016-T | 275 x 135 x 110 | Pole mounted junction box/cut-out box/fuse box for road/street lighting for 3 phase/4 core high wattage HPSV/HPMV/MH based lighting system for industrial, commercial as well as flood lighting applications |
| SLIDING – DOOR FIXED TO BASE BY MEANS OF SLIDING | | |
| GSJB-3416 | 340 x 160 x 90 | Pole mounted junction box/cut-out box/fuse box for road/street lighting for 3 phase/4 core high wattage HPSV/HPMV/MH based lighting system for industrial, commercial as well as flood lighting applications Provision for fixing 2 cut-outs, one for lighting and other for kiosks/signage/emergency power supply |
| REMOVABLE – DOOR FIXED TO THE BASE BY MEANS OF HARDWARE | | |
| GSJB-1510-R | 155 x 100 x 60 | Control terminal box/cut-out box |
| GSJB-1816-R | 185 x 165 x 60 | |
| GSJB-2818-R | 280 x 180 x 60 | |

SMC Meter Boxes

Features:

- Single piece moulded without any joints
- Concealed metal hinges
- Mounting screws fitted from inside
- Metal hardware for wire seal
- Adequate space for meter and cut-outs
- Wide range for different applications
- Lightweight yet strong
- Weatherproof
- Prices matching conventional meter boxes
- Shockproof
- Free from pilferage
- Maintenance-free



FRP Ladders

Introducing, for the first time in India, Sintex FRP Ladders that find a variety of applications in domestic as well as industrial units. Manufactured as per international OSHA specifications, Sintex FRP Ladders are an optimum combination of safety, elegance and economy.



Features:

- Compact and easy to carry
- Waterproof and rustproof
- Designed for optimum stability as per international OSHA and ANSI standards
- Shockproof
- Lightweight and strong
- Safe and durable

| RANGE & SPECIFICATIONS | | |
|------------------------|-----------------------|-----------------------|
| Self-Support 'A' type | Wall Support | Extendable |
| 6 feet (GPFL-060-01) | 15 feet (GPFL-150-WS) | 20 feet (GPFL-200-ES) |
| 5 feet (GPFL-050-01) | 18 feet (GPFL-180-WS) | 40 feet (GPFL-400-ES) |
| 4 feet (GPFL-040-01) | - | - |
| 3 feet (GPFL-030-01) | - | - |

SMC Sheets



Features:

- Excellent dielectric properties such as volume resistivity, surface resistivity, arc resistance and comparative tracking index
- Can withstand continuous temperatures up to 140°C
- Anti-corrosive and resistant to most acids, alkalis and chemicals
- Lightweight, strong, stiff and clean
- Non-hygroscopic and retains its dielectric properties even in high humidity
- Weatherproof
- Self-coloured
- Maintenance-free

| RANGE & SPECIFICATIONS | |
|---|-------------------------------|
| Size (m) | 1 x 1 |
| Standard Thicknesses (mm) | 1.5, 2.5, 4, 6, 9, 12, 15 |
| Material of Construction | Sheet Moulding Compound (SMC) |
| Custom Thicknesses on Large Requirements (mm) | From 1.5 to 15 |
| Standard Colour | Off-white |
| Custom against Large Requirements | Other colours can be offered |

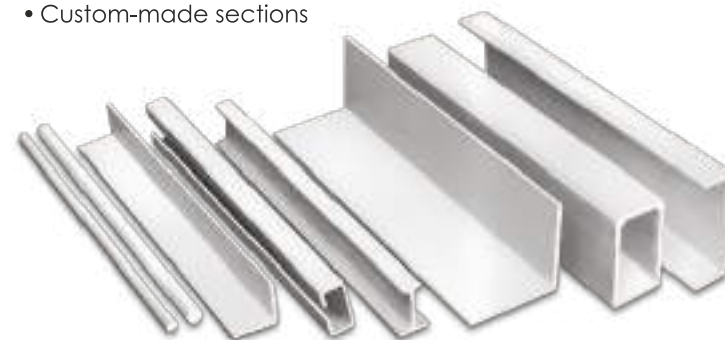
FRP Pultruded Sections

Features:

- High strength to weight ratio
- Corrosion-proof and resistant to most acids, alkalis and chemicals
- Suitable for all types of weather conditions
- Self-coloured and generally does not require painting
- Excellent electrical properties such as tracking resistance, high arc resistance and electrical insulation
- Poor conductor of heat and sound
- Stable in continuous operating in axial direction
- Lightweight, strong and durable
- Can be joined with mechanical fasteners or adhesives

Range:

- Angles
- Rods
- 'C' Sections
- Hollow rectangular sections
- Custom-made sections
- Approximately 50 different sizes and shapes available to choose from
- 'I' sections



Note: Jobs for custom designed sections can be taken up. Specific resin system can be adopted against bulk requirements.

| RANGE & SPECIFICATIONS | | |
|-----------------------------|------------------------------------|---|
| Code No. | Internal Dimensions (mm) H x W x D | Description |
| SINGLE HINGED DOOR | | |
| GSMB-2520 | 250 x 200 x 105 | L.T. 1 phase kWh meter |
| GSMB-2522 | 250 x 220 x 135 | L.T. 1 phase kWh meter |
| GSMB-2525 | 250 x 250 x 155 | L.T. 1 phase kWh meter |
| GSMB-2823 | 285 x 230 x 150 | 10 meter box with transparent lid |
| GSMB-3428 | 340 x 285 x 120 | L.T. 3 phase kWh meter |
| GSMB-3525 | 350 x 250 x 150 | L.T. 3 phase kWh meter |
| GSMB-3527 | 350 x 270 x 200 | L.T. 3 phase kWh meter |
| GSMB-3726 | 325 x 220 x 150 | L.T. 3 phase kWh meter |
| GSMB-3920 | 390 x 200 x 105 | L.T. 3 phase kWh meter |
| GSMB-3923 | 380 x 225 x 140 | L.T. 3 phase kWh meter |
| GSMB-3727 | 370 x 270 x 210 | L.T. 3 phase static kWh meter |
| GSMB-4030 | 400 x 300 x 190 | L.T. 3 phase kWh meter |
| GSMB-4537 | 450 x 375 x 200 | L.T. 3 phase kWh meter |
| GSMB-5345 | 530 x 450 x 175 | Multi-meter box for housing 4 nos. 1 phase meters and 3 nos. 3 phase meters |
| GSMB-5030 | 500 x 300 x 230 | Meter and modem box |
| GSMB-5431 | 540 x 310 x 200 | Meter and modem box |
| GSMB-3750 | 345 x 480 x 135 | 1 phase 2 meter box |
| GSMB-3750 | 345 x 480 x 210 | Multi-meter box for housing 3 nos. 1 phase meters |
| GSMB-5728 | 570 x 280 x 220 | H.T. TVM with TTB |
| GSMB-6545 | 650 x 450 x 150 | Multi-meter box for 4 nos. 1-ph. and 2 nos. 3-ph. kWh meters |
| GSMB-7450 | 700 x 480 x 210 | Multi-meter box for 6 nos. 1-ph. and 4 nos. 3-ph. kWh meters |
| GSMB-10069 | 1000 x 690 x 215 | Multi meter box housing 10, 12, 16 nos. 1 phase meters and 6, 9 nos. 3 phase meters |
| DOUBLE HINGED DOOR | | |
| GSMB-4422 | 430 x 215 x 150/120 | L.T. 1 phase kWh meter with MCB and with viewing window for MCB |
| GSMB-4422-I | 430 x 215 x 150/120 | L.T. 1 phase kWh meter with MCB |
| GSMB-5628 | 505 x 240 x 150 | L.T. 3 phase kWh meter with MCB |
| GSMB-5628-I | 505 x 240 x 150 | L.T. 3 phase kWh meter with MCB |
| GSMB-5628-II | 505 x 240 x 265/150 | L.T. 3 phase electronic kWh meter mounted on cast resin bar primary C |
| GSMB-6535 | 650 x 350 x 250 | L.T. TVM with CTs |
| GSMB-6535-I | 650 x 350 x 210 | L.T. TVM with CTs |
| GSMB-6535-II | 650 x 350 x 255 | L.T. TVM with CTs |
| GSMB-7627 | 760 x 270 x 170 | L.T. TVM with CTs |
| GSMB-8135 | 810 x 350 x 230 | L.T. TVM with CTs |
| GSMB-8535 | 850 x 350 x 250 | L.T. TVM with CTs |
| GSMB-9035 | 900 x 350 x 250 | L.T. kWh/TVM with fuses/CTs/TTB |
| GSMB-9045 | 900 x 450 x 250 | L.T. TVM with CTs |
| GSMB-7450 | 700 x 480 x 210 | Multi-meter box for housing 4, 6 nos. 1 phase meters and 4 nos. 3 phase meters |
| GSMB-10035 | 1000 x 350 x 230 | L.T. TVM with CTs and modem |
| SINGLE DOOR PUSH FIT | | |
| GSMB-2520-T | 250 x 200 x 105 | 1 phase kWh meter (electronic) with P.C. transparent lid |
| GSMB-2619-T | 260 x 190 x 129 | 1 phase kWh meter (electronic) with P.C. transparent lid |
| GSMB-3428 | 340 x 285 x 120 | 1 phase kWh meter (electronic) |
| GSMB-3833 | 384 x 334 x 125 | 3 phase electronic kWh meter |
| GSMB-3727 | 370 x 270 x 210 | 3 phase electronic kWh meter |
| GSMB-3727-I | 370 x 270 x 145 | 3 phase electronic kWh meter |

SMC Distribution Boxes

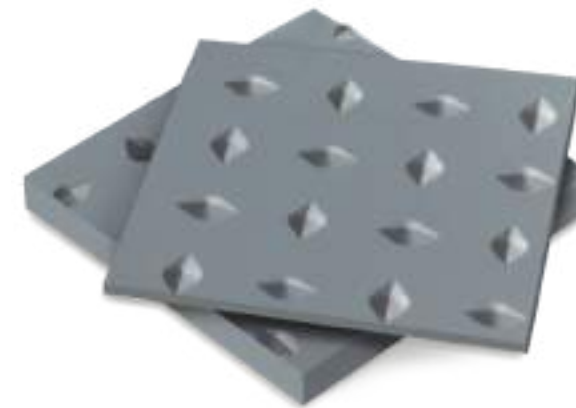
Features:

- High heat distortion temperature (200°C as per IS:10192)
- Non-fusing
- Shockproof and rustproof
- Rotproof and termite resistant
- Ideal for both indoor and outdoor use
- Elegant appearance
- 100% weatherproof
- Fire retardant – Class FV-0 as per IS:11731 Part-II or V-0 as per UL-94



| RANGE & SPECIFICATIONS | | |
|---------------------------|----------------------------------|--|
| Code No. | Inside Dimensions (mm) H x W x D | Application |
| SINGLE HINGED DOOR | | |
| GSDB-3020 | 295 x 195 x 100 | 1 phase service connection distribution box, fuse box |
| GSDB-3126 | 270 x 225 x 135 | Electrical and hydraulic instruments, cut-outs, controls and switchgear |
| GSDB-3428 | 340 x 285 x 120 | Fuse box |
| GSDB-3525 | 350 x 250 x 150 | Fuse box |
| GSDB-3527 | 350 x 270 x 200 | Fuse box |
| GSDB-3726 | 325 x 220 x 150 | Fuse box |
| GSDB-3750 | 345 x 480 x 135 | Pole top DB |
| GSDB-3920 | 390 x 200 x 105 | Fuse box |
| GSDB-3727 | 370 x 270 x 210 | Busbar chamber box |
| GSDB-4030 | 400 x 300 x 190 | 3 phase service connection distribution box/ABC distribution box |
| GSDB-5431 | 540 x 310 x 200 | |
| GSDB-5728 | 570 x 280 x 220 | Busbar chamber box |
| DOUBLE HINGED DOOR | | |
| GSDB-4422 | 430 x 215 x 150/120 | Control terminal box, fuse box |
| GSDB-4422-I | 430 x 215 x 150/120 | Control terminal box, fuse box |
| GSDB-5628 | 505 x 240 x 150 | Busbar chamber box |
| GSDB-5628-I | 505 x 240 x 150 | Busbar chamber box |
| GSDB-5628-II | 505 x 240 x 265/150 | Busbar chamber box |
| GSDB-6050 | 600 x 500 x 250 | 1 phase distribution box |
| GSDB-6535 | 650 x 350 x 250 | Busbar chamber box |
| GSDB-6535-I | 650 x 350 x 210 | Busbar chamber box |
| GSDB-6535-II | 650 x 350 x 255 | Busbar chamber box |
| GSDB-7450 | 700 x 480 x 210 | Electrical control and switchgear items such as MCCB, fuse, isolator and busbar distribution box |
| GSDB-10069 | 1000 x 690 x 300 | Electrical control and switchgear items such as MCCB, fuse, isolator and busbar distribution box |
| GSDB-11569 | 1150 x 690 x 350 | Electrical control and switchgear items such as MCCB, fuse, isolator and busbar distribution box |
| GSDB-120110 | 1200 x 1100 x 400 | With canopy + front and back (optional) doors and pedestal (optional) TNEB mini and UGVCLFSP |

SMC Chequered Plates



| RANGE & SPECIFICATIONS | |
|------------------------|----------------------------|
| Rating of Equipment | Recommended Thickness (mm) |
| 3.3 kV | 2.5 |
| 6.6 kV | 2.5 |
| 11.0 kV | 2.5 |
| 22.0 kV | 2.5 |
| 33.0 kV | 5.0 |
| 66.0 kV | 5.0 |
| EHT Switch Yard | 10.0 |

Features:

- Durable and resistant to decay
- Maintenance-free
- High dielectric strength
- High life expectancy
- Easy to fix on floor
- Excellent insulation
- Anti-corrosive
- Can withstand the load of breaker trolleys without obstructing their movement
- Lightweight

SMC Trench Covers and Gratings

Features:

- Lightweight and strong
- Durable and resistant to decay
- Anti-corrosive
- Resistant to wear and tear
- Fire retardant
- Zero resale value, hence no problem of pilferage
- High life expectancy

| RANGE & SPECIFICATIONS | |
|------------------------|--|
| Length (m) | 1 |
| Width (m) | 0.3, 0.45, 0.6, 0.75, 0.9, 1, 1.2 respectively or as per order |
| Standard Colour | Grey |

Note: Sintex Trench Covers and Gratings are also supplied prefabricated with reinforcements of MS sections or FRP Pultruded sections to meet specific load applications.



SMC MCB Distribution Boards (DBs)

Features:

- Specially folded construction prevents access to water, insects and dust
- Specially folded cover allows hinges to be fitted such that they can't be opened once fitted (provision for concealed hinges for total security)
- Moulded plastic extension pieces for fixing on the walls
- Moulded-in louvers for ventilation
- Holes on sides for dissipation of heat
- Moulded-in projections for fixing MCB, switches, etc.

| RANGE & SPECIFICATIONS | | |
|------------------------|----------------------------------|--------------|
| Code No. | Inside Dimensions (mm) H x W x D | Applications |
| GSDB-1510 | 155 x 100 x 60 | 4-way |
| GSDB-1816 | 185 x 160 x 60 | 8-way |
| GSDB-2818 | 208 x 185 x 60 | 12-way |



SMC Distribution Pillar Boxes

Range:

Standard design made as per the electrical requirements to suit conventional power distribution systems consisting of protection devices and metering, and also as per the clients' requirements.

- Mini pillars
- 2-way feeder pillar boxes
- 4-way feeder pillar boxes
- 6-way feeder pillar boxes
- 8-way feeder pillar boxes

The above configurations are available with electrical circuitry consisting of busbar works and protection devices such as rewirable kit-kats, HRC fuses, 1p/3p MCCB, and switch disconnecter/switch fuse disconnecter, etc. to suit the clients' requirements.

Note: Other sizes/ratings and configurations are available on request.



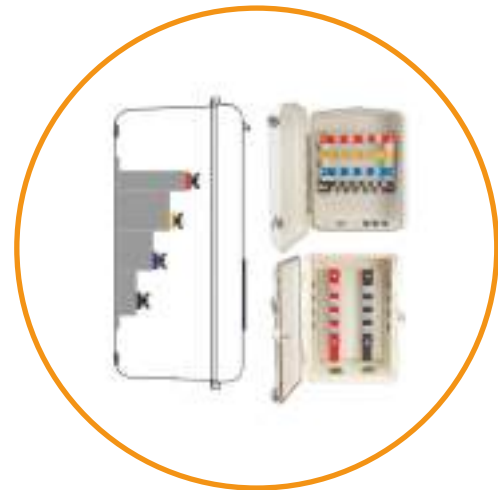
Features:

- Fabricated by combining SMC and pultruded FRP sections
- Maintenance-free
- Rustproof and shockproof
- Withstands coastal/polluted atmosphere, solar radiation and heavy rains
- Safe for humans as well cattle due to insulated body

SMC Service Connection Distribution Boxes for AB Cable



SPRING LOADED CONSTANT PRESSURE MULTI-CONNECTION BUSBAR SYSTEM



BUSBAR WITH SCREW BOLT CONNECTION SYSTEM

Features:

- Ingress protection to IS:8623
- Pole mounting arrangement
- Busbar for high fault currents
- Cable entry from bottom and/or sides
- Easy and organised management of consumer connections
- Shockproof and rustproof, suitable for polluted atmospheres
- Very high working temperature and higher arc resistance
- Weatherproof
- Maintenance-free

| RANGE & SPECIFICATIONS | | | | | |
|---|------------------------|--------------------|----------------|----------------------|--|
| Code No. | Approx. Dimension (mm) | No. of Service I/C | Connection O/G | No. of Busbar Module | |
| SMC SERVICE MAINS DB HAVING SPRING LOADED CONSTANT PRESSURE, MULTI-CONNECTION BUSBAR IN SMC CASING | | | | | |
| GSSB-3020-406 | 300 x 200 x 130 | 1 no. 3-ph. TPN | 5 nos. TPN | 4 nos. 6-way | |
| GSSB-3020-406 A | 300 x 200 x 130 | 1 no. 1-ph. SPN | 9 nos. SPN | 4 nos. 6-way | |
| GSSB-4030-210 | 400 x 300 x 190 | 1 no. 1-ph. SPN | 9 nos. SPN | 2 nos. 10-way | |
| GSSB-4030-410 | 400 x 300 x 190 | 1 no. 3-ph. TPN | 9 nos. TPN | 4 nos. 10-way | |
| GSSB-4030-410 A | 400 x 300 x 190 | 1 no. 1-ph. SPN | 17 nos. SPN | 4 nos. 10-way | |
| SMC SERVICE MAINS DB HAVING BUSBAR WITH SCREW BOLT CONNECTION THROUGH FLY NUT | | | | | |
| GSSB-3020-2 BB | 300 x 200 x 130 | 1 no. 1-ph. SPN | 5 nos. SPN | 2 nos. 6-way | |
| GSSB-3923-BB | 380 x 225 x 140 | 1 no. 1-ph. SPN | 8 nos. SPN | 2 nos. 9-way | |
| GSSB-3527-2 BB | 350 x 270 x 210 | 1 no. 1-ph. SPN | 8 nos. SPN | 2 nos. 9-way | |
| GSSB-4030-4 BB | 400 x 300 x 190 | 1 no. 3-ph. TPN | 4 nos. TPN | 4 nos. 5-way | |
| GSSB-4030-4 BBA | 400 x 300 x 190 | 1 no. 1-ph. SPN | 12 nos. SPN | 4 nos. 9-way | |
| GSSB-4537-BB | 450 x 375 x 200 | 1 no. 3-ph. TPN | 4 nos. TPN | 4 nos. 5-way | |
| SMC SERVICE MAINS DB WITH CLIP ON TYPE TERMINAL BLOCKS (TB) | | | | | |
| GSDDB-3020-SP05-FB | 300 x 200 x 105 | 1 no. 1-ph. SPN | 5 nos. SPN | Link Mounted TB | |
| GSDDB-4030-TP04-FB | 400 x 300 x 190 | 1 no. 3-ph. TPN | 4 nos. TPN | Link Mounted TB | |

LCS



Features:

- LCS (Local Control Station) with push buttons, selector switch, ammeter, voltmeter and emergency stop
- FRP enclosure with ingress protection
- Compact and excellent aesthetics
- Tamper proof
- Maintenance-free
- Shockproof and dustproof enclosure
- High mechanical strength
- Excellent electrical property and reliability
- 100% weatherproof and ideal for indoor and outdoor applications
- Fire retardant

Range:

- LCS with start/stop push buttons
- LCS with start/stop, auto/manual SS with ammeter and voltmeter
- LCS with customised application

Applications:

- Railways
- Steel plants
- Machines
- Industrial plants, etc.



SMC Danger Notice Plates

Features:

- Excellent finish and dimensional consistency
- Excellent weather resistance
- Rustproof
- No fear of vandalism
- Withstands coastal and polluted atmosphere
- Withstands solar radiation
- Maintenance-free: SMC does not corrode, hence retains paint for longer duration
- Transparent weather resistant coating
- Pilfer proof: zero resale value

| RANGE & SPECIFICATIONS | | |
|------------------------|-----------|-------------------------------|
| Code No. | Size (mm) | Applications |
| GSSH-2025-1.6 | 200 x 250 | For 11 kV and HV installation |
| GSSH-1520-1.6 | 150 x 200 | For 415 V and LV installation |



FRP Aerial Fuse Boards



Features:

- FRP base fuse board
- Shatter resistant
- Integrated parts, hence no detachment
- Excellent dielectric strength, no leakage
- Safe, tried and tested method
- Decay-proof, hence longer life

| RANGE & SPECIFICATIONS | | |
|------------------------|--------------------------------|----------------|
| Range | Code No. 3-way | Code No. 6-way |
| 15A | GSFB-15A3-01 | GSFB-15A6-01 |
| 30A | GSFB-30A3-01 | GSFB-30A6-01 |
| 60A | GSFB-60A3-01 | GSFB-60A6-01 |
| >60A | Please contact us for fuse box | |

SMC Moulded Service Connection Boards

Features:

- Rustproof and waterproof
- Weatherproof and termite proof
- Maintenance-free
- Withstands solar radiation and heavy rains
- Excellent finish and dimensional consistency
- No decay, hence no painting or plank replacement required
- Consistent quality and timely delivery to match the pace of the project

| RANGE & SPECIFICATIONS | | | |
|------------------------|-----------|------------------------------|--|
| Code No. | Size (mm) | Description | Suitable for installation of |
| GSBPL-2515 | 250 x 150 | 1 Ø Service Connection Board | DP Switch, Lamp Holder, Switch and Fuse |
| GSBPL-3025 | 300 x 250 | 1 Ø Service Connection Board | 1 Ø Meter, DP Switch, Lamp Holder, Switch and Fuse |
| GSBPL-3520 | 350 x 200 | 1 Ø Service Connection Board | 1 Ø Meter, DP Switch, Fuse and Earth Terminal |
| GSBPL-3030 | 300 x 300 | 1 Ø Service Connection Board | 1 Ø Meter DP MCB and Earth Terminal |
| GSBPL-4530 | 450 x 300 | 1 Ø Service Connection Board | 1 Ø Meter, Lamp Holder, Switch, Earth Terminal, Neutral Link |



FRP 'V' Type Arms (REC Design)

Features:

- Anti-corrosive, hence suitable for coastal and polluted atmosphere
- Ideal for harsh weather conditions
- No change in conductor formation/configuration as well as ground clearance while replacing metal 'V' type cross arms of existing lines
- Maintenance-free and requires no painting
- Extremely safe
- Reduced transportation cost and ease of erection
- Suitable for 11 kV overhead line
- Lightweight yet strong



| RANGE & SPECIFICATIONS | | |
|------------------------|------------------|--|
| Code No. | Description | Application |
| GSXA-011-01 | V Type Cross Arm | 11 kV Lines 3Ø/1Ø Composite and 1Ø (Ph-N)/(Ph-Ph) type with or without earthwire |
| GSTH-011-01 | Top Hamper | |

Note: Flat Type FRP Cross Arms of 11 kV and 33 kV as per REC specifications and of 2' and 4' length with various pin configurations are available. Custom sizes are also available as per customer requirements.

FRP Straight Cross Arms (REC Design)

Features:

- Excellent insulation
- Lightweight and strong
- Special polymeric reinforcement provided as per REC specifications
- Anti-corrosive
- Ideal for any weather condition
- Made from advanced composite of plastics
- Extremely safe

| RANGE & SPECIFICATIONS |
|------------------------|
| 11 kV Cross Arm |
| 11 kV Top Hamper |
| 33 kV Cross Arm |
| 33 kV Top Hamper |



Note: Conforms with REC specifications. No. 40 Rev. 97 for 11 kV. No. 42 Rev. 97 for 33 kV.

FRP Fencing

Features:

- Non-conductive due to high dielectric strength
- Strong and durable
- Non-corrosive nature
- Termite proof and rotproof
- Aesthetic design
- Maintenance-free
- Fire retardant
- Zero resale value – pilfer proof

